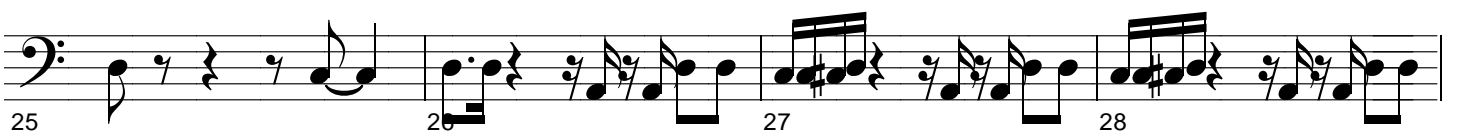
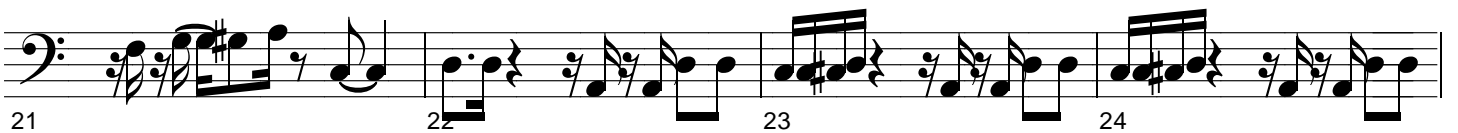
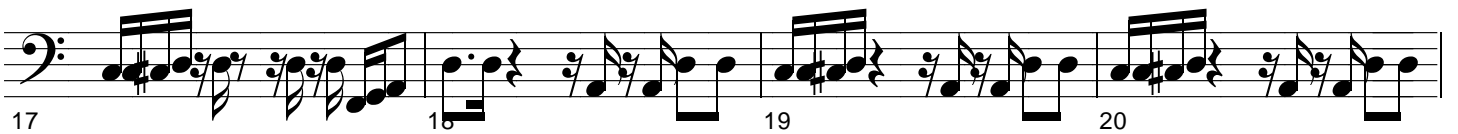
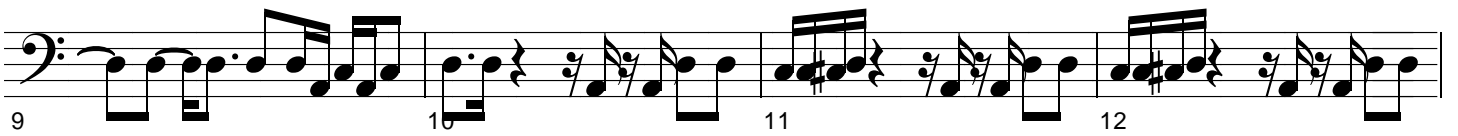
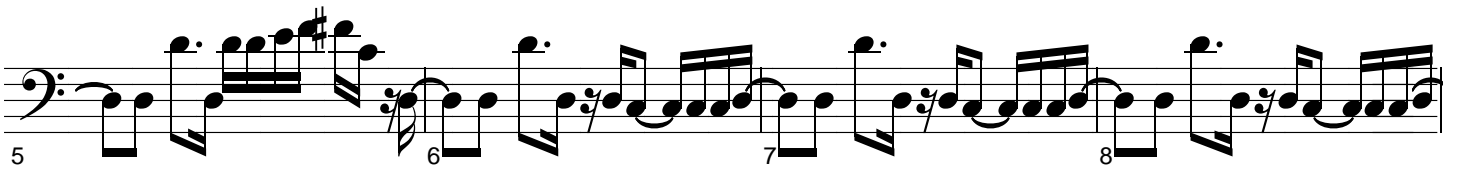
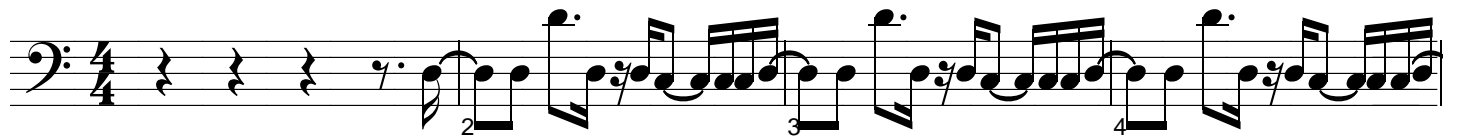


Soul Vaccination, Tower of Power, 1973



Francis Rocco Prestia, bass

37 38 39 40

41 42 43 44

45 46 47 48

49 50 51 52

53 54 55 56

57 58 59 60

61 62 63 64

65 66 67 68

69 70 71 72

73 74 75 76

77 78 79 80

81 82 83 84

85 86 87 88

89 90 91 92

93 94 95 96

97 98 99 100

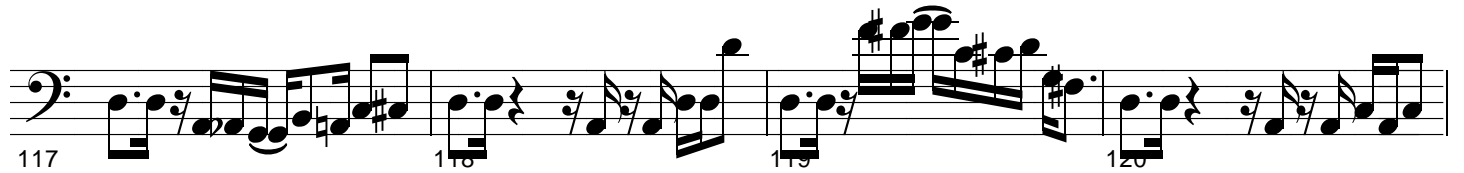
101 102 103 104

105 106 107 108

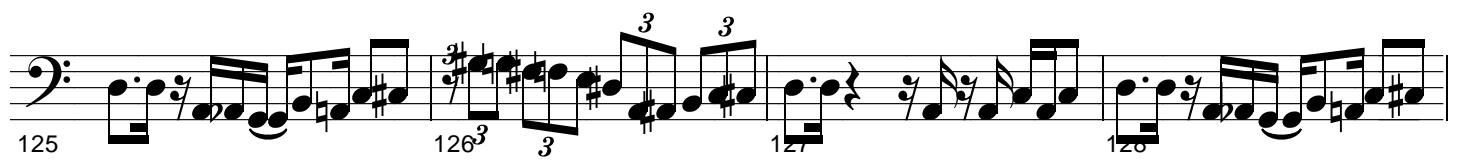
Francis Rocco Prestia, bass

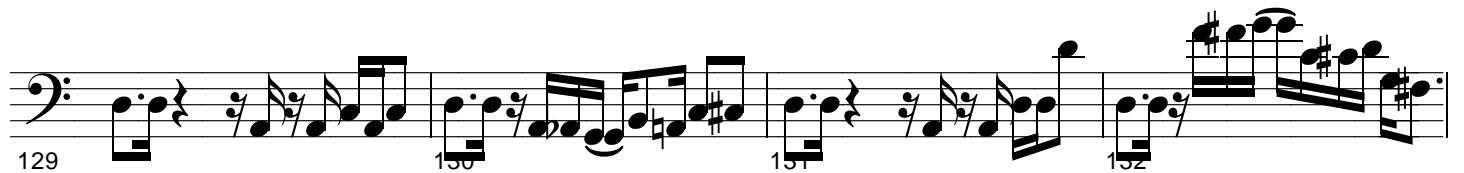
109  Musical notation for measures 109-112. Measure 109 starts with a bass clef and a 7/8 time signature. The notation includes eighth and sixteenth notes, rests, and a double bar line. Measure 110 has a first ending bracket over the first two measures. Measure 111 has a first ending bracket over the last two measures. Measure 112 ends with a double bar line.

113  Musical notation for measures 113-116. Measure 113 starts with a bass clef and a 7/8 time signature. The notation includes eighth and sixteenth notes, rests, and a double bar line. Measure 114 has a first ending bracket over the first two measures. Measure 115 has a first ending bracket over the last two measures. Measure 116 ends with a double bar line.


117  Musical notation for measures 117-120. Measure 117 starts with a bass clef and a 7/8 time signature. The notation includes eighth and sixteenth notes, rests, and a double bar line. Measure 118 has a first ending bracket over the first two measures. Measure 119 has a first ending bracket over the last two measures. Measure 120 ends with a double bar line.

121  Musical notation for measures 121-124. Measure 121 starts with a bass clef and a 7/8 time signature. The notation includes eighth and sixteenth notes, rests, and a double bar line. Measure 122 has a first ending bracket over the first two measures. Measure 123 has a first ending bracket over the last two measures. Measure 124 ends with a double bar line.

125  Musical notation for measures 125-128. Measure 125 starts with a bass clef and a 7/8 time signature. The notation includes eighth and sixteenth notes, rests, and a double bar line. Measure 126 has a first ending bracket over the first two measures, with a triplet of eighth notes marked '3'. Measure 127 has a first ending bracket over the last two measures. Measure 128 ends with a double bar line.

129  Musical notation for measures 129-132. Measure 129 starts with a bass clef and a 7/8 time signature. The notation includes eighth and sixteenth notes, rests, and a double bar line. Measure 130 has a first ending bracket over the first two measures. Measure 131 has a first ending bracket over the last two measures. Measure 132 ends with a double bar line.

133  Musical notation for measures 133-136. Measure 133 starts with a bass clef and a 7/8 time signature. The notation includes eighth and sixteenth notes, rests, and a double bar line. Measure 134 has a first ending bracket over the first two measures. Measure 135 has a first ending bracket over the last two measures, with a triplet of eighth notes marked '3'. Measure 136 ends with a double bar line.

137  Musical notation for measures 137-140. Measure 137 starts with a bass clef and a 7/8 time signature. The notation includes eighth and sixteenth notes, rests, and a double bar line. Measures 138, 139, and 140 are empty staves, indicating a rest or a break in the music.