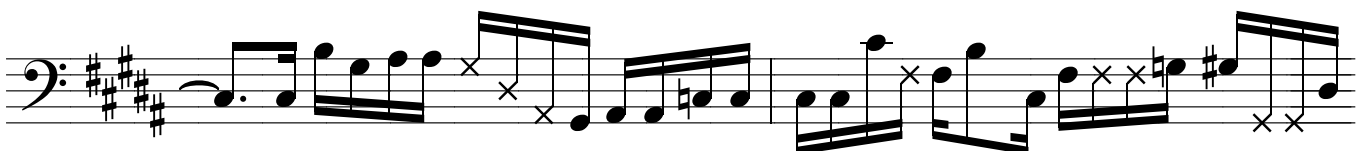
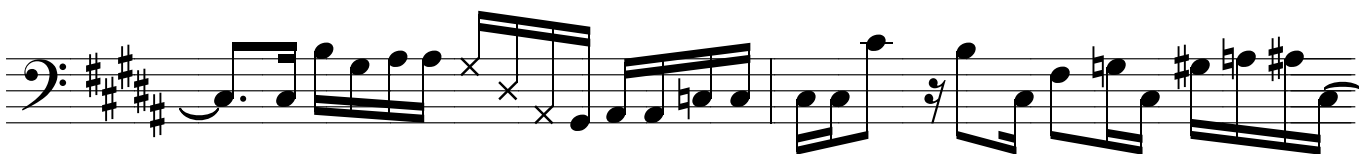
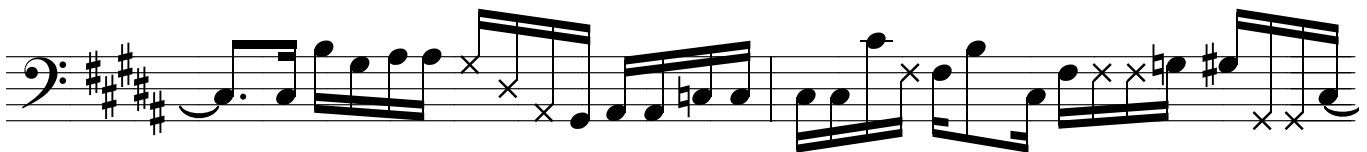
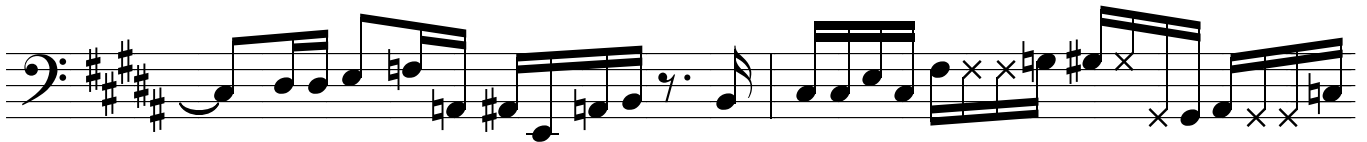
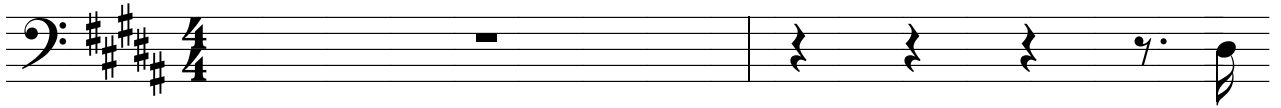


Barbary Coast, Weather Report, 1976



Jaco Pastorius, bass

This image displays ten staves of musical notation for bass guitar, arranged vertically. The notation is written in a key signature of three sharps (F#, C#, G#) and a common time signature (C). The music is characterized by intricate rhythmic patterns, including sixteenth and thirty-second notes, and frequent use of accidentals (sharps and naturals). Several measures include 'x' marks above notes, indicating natural harmonics. A triplet of eighth notes is marked with a '3' in the first staff. The notation is dense and technical, typical of a complex bass line.

The image displays a musical score for bass guitar, written in E major (indicated by four sharps in the key signature). The score consists of eight staves of music. The first staff begins with a melodic phrase, followed by a triplet of eighth notes. The subsequent staves continue the melodic development, incorporating various rhythmic patterns, including eighth and sixteenth notes, and rests. The notation includes stems, beams, and various accidentals (sharps and naturals). The piece concludes with a final melodic phrase on the eighth staff.